



GLYPH TECHNOLOGIES

3736 Kellogg Rd
Cortland, New York 13045 USA
Phone 607-275-0345
Fax 607-275-9464
www.glyphtech.com

Windows XP and Vista Write Performance Problem With Glyph FireWire Hard Drives

Addendum 630012

Draft 1.0

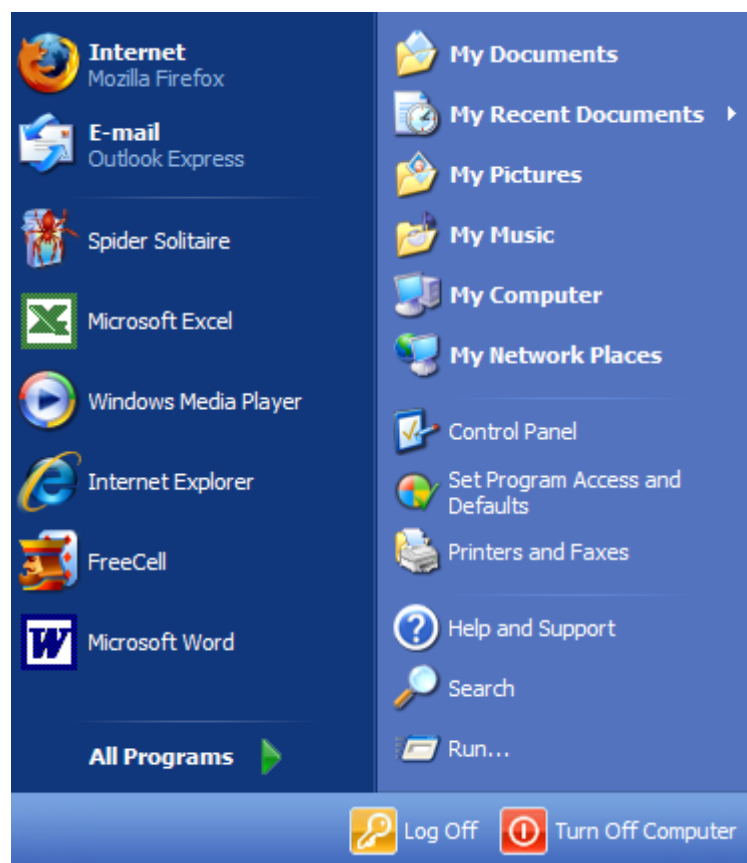
Date: 15/Nov/2007

1. Introduction

A Problem has been identified which affects any Glyph FireWire drive connected to a Windows XP or Vista computer, that results in slow write speeds to the Glyph drive. The default Windows settings for FireWire-connected drives can reduce your Glyph drive performance by as much as 90%. This problem is easily corrected, just follow these instructions:

2. Instructions:

1. Connect the Glyph drive to your computer via FireWire. To avoid confusion, it is recommend that you disconnect all other external drives.
2. Click on "Start"



Addendum 630012

© Glyph Technologies - November 15, 2007

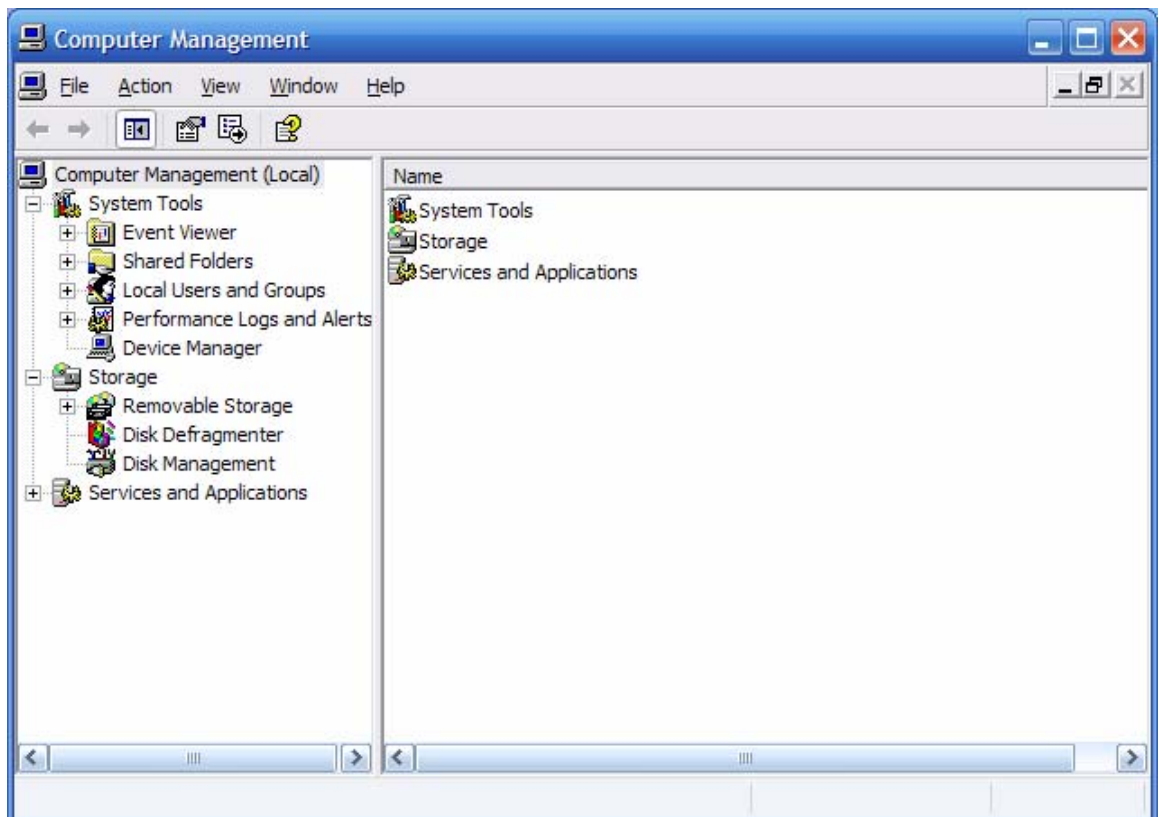
1/6

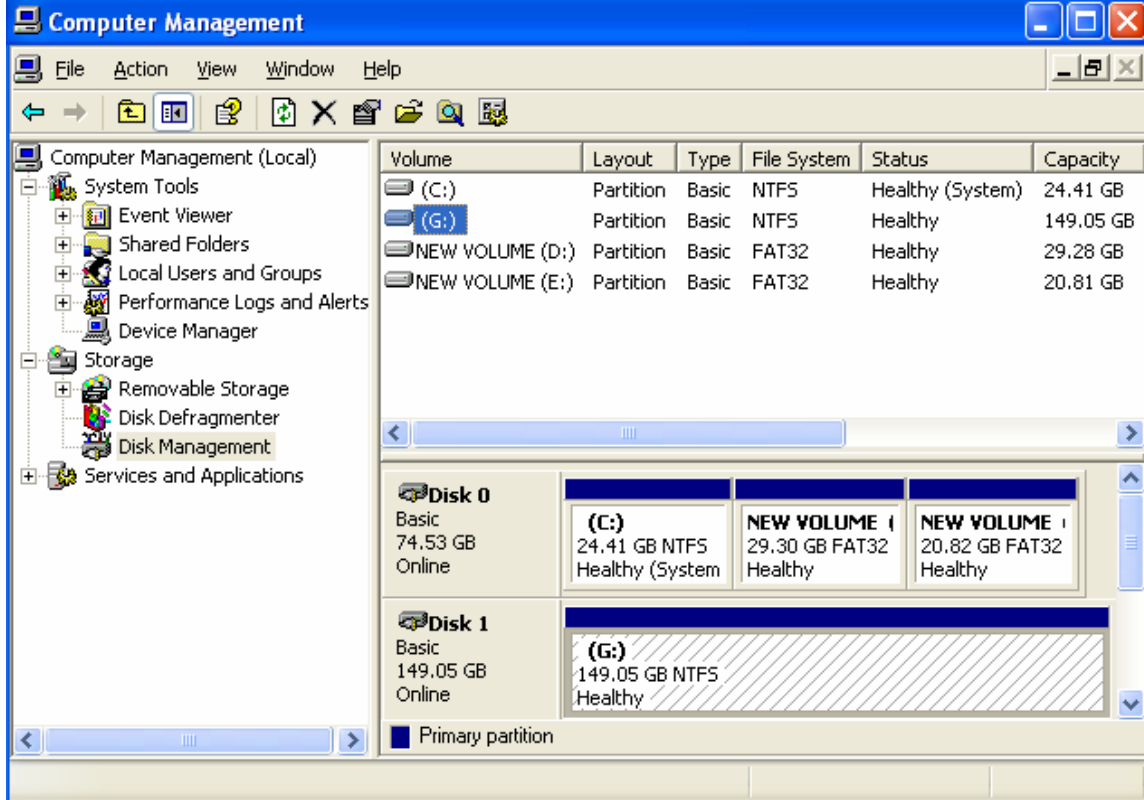
3. Right click on "My Computer"

4. Select "Manage"

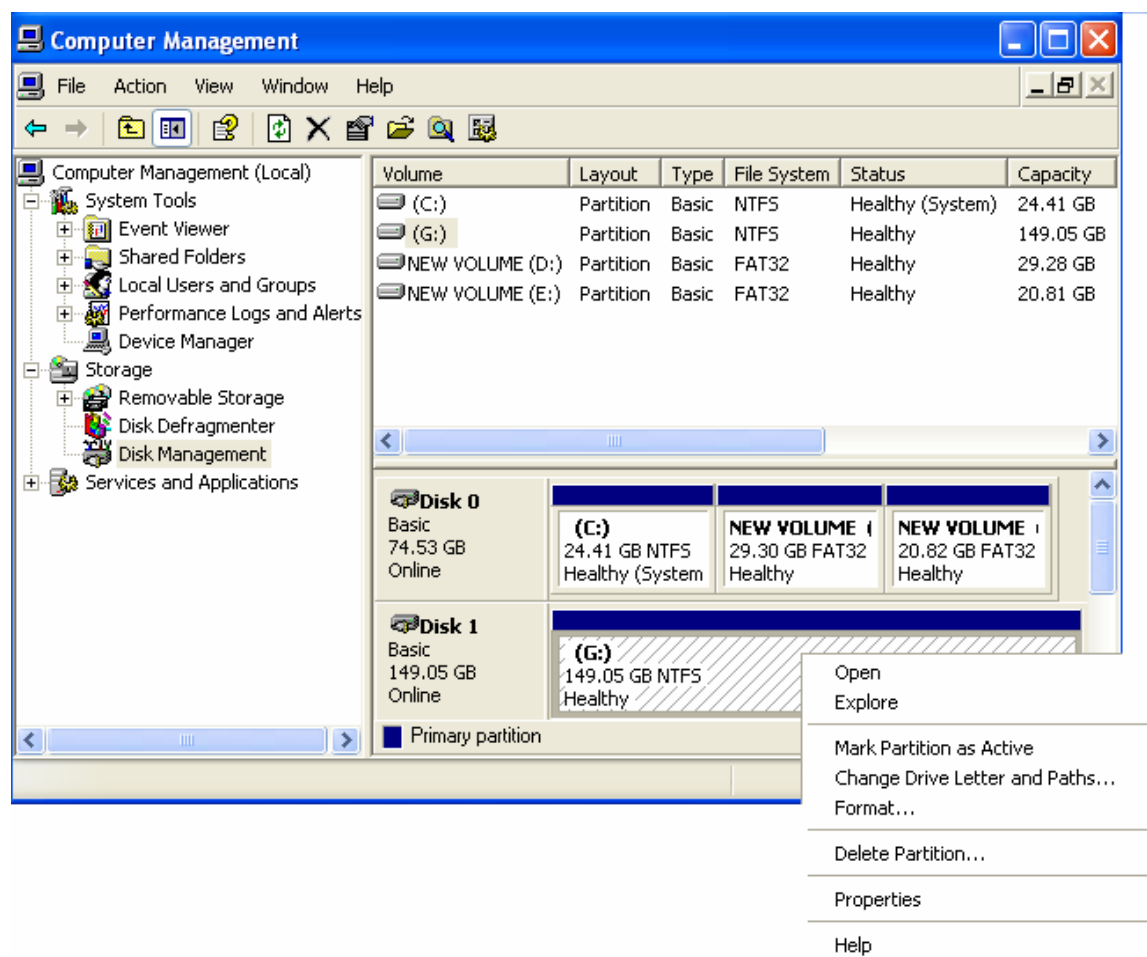


5. On the left hand panel, select "Disk Management"

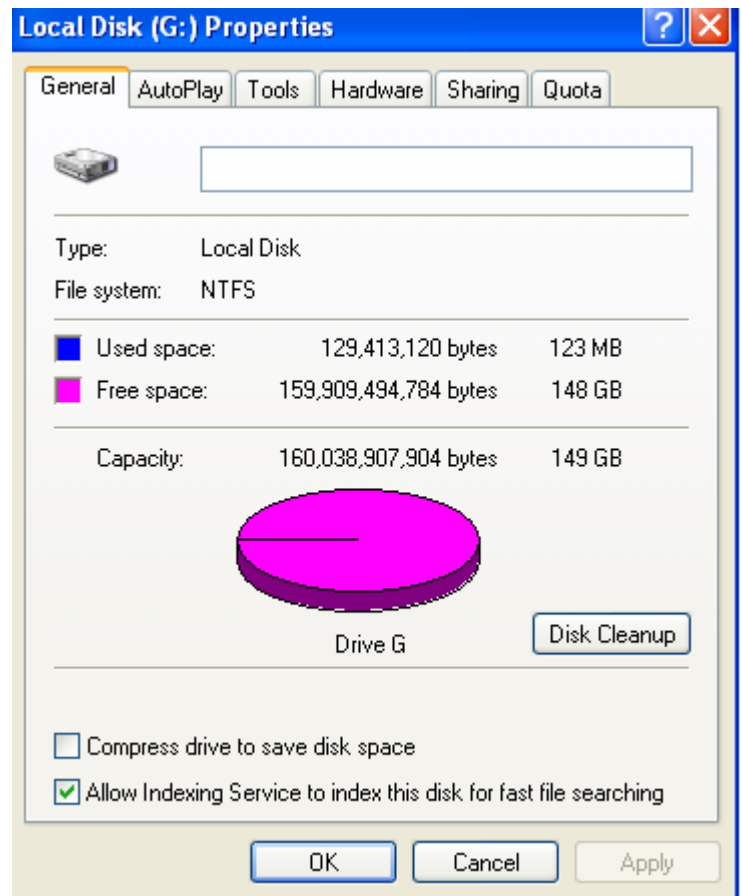




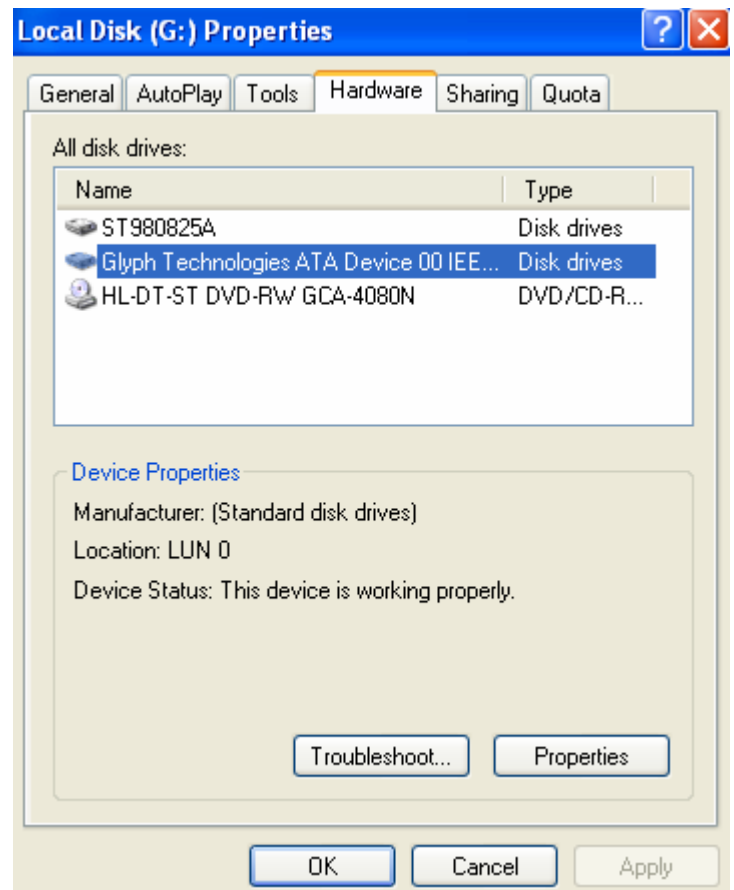
6. Right click on the volume that represents the Glyph drive and select properties.



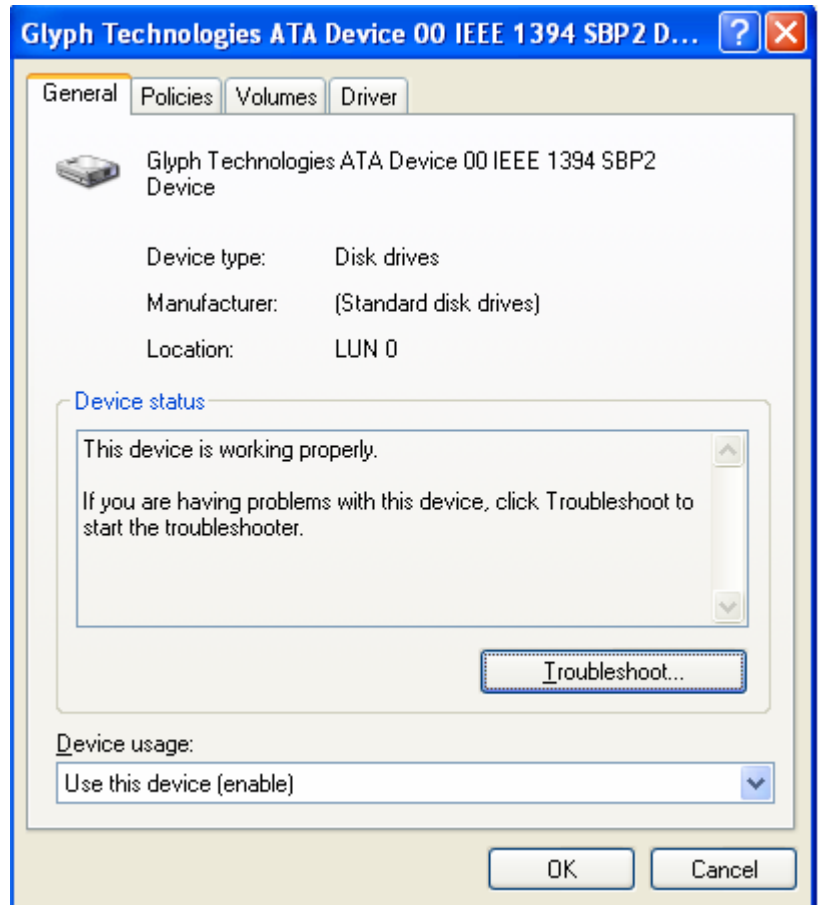
7. Click the "Hardware" tab.



8. Highlight the Glyph drive on the drive list and click on "Properties".



9. Click on the "Policies" tab.

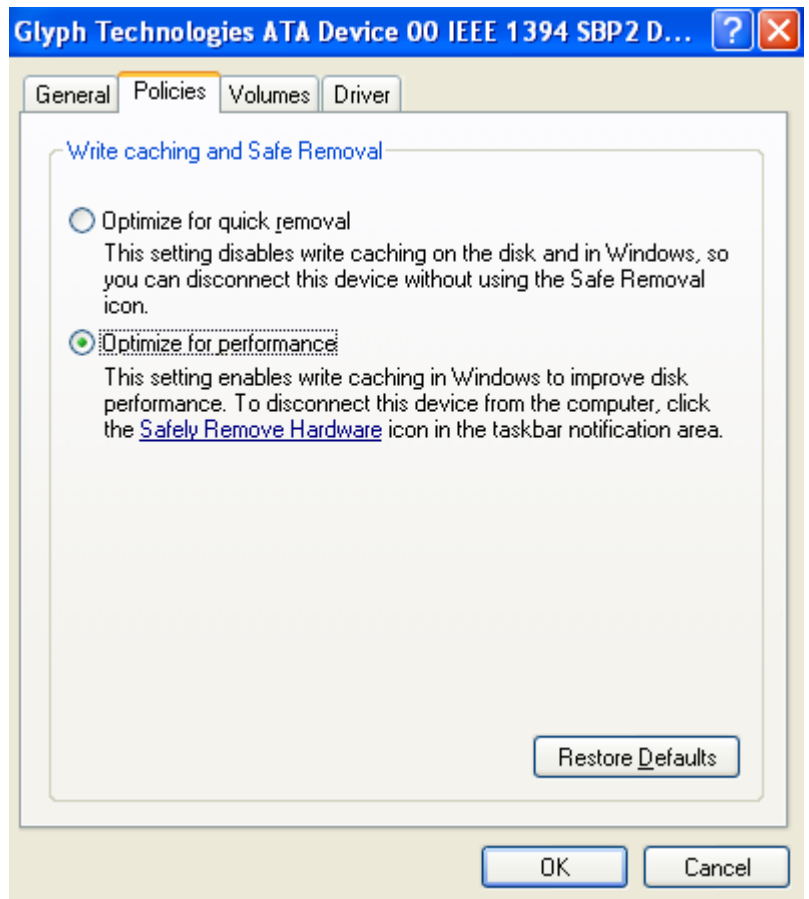


10. You will see two radio buttons - "Optimize for quick removal" and "optimize for performance".

11. If not selected, select **"Optimize for performance"** and click on "OK". If running Vista also check "enable write caching on the disk".

12. Click on "OK" and exit Computer Management.

This problem affects Vista and XP, we have not looked at 2000. It may improve performance for any Glyph drive connected via FireWire.



PROPRIETARY NOTICE AND DISCLAIMER

Unless noted otherwise, this document and the information herein disclosed are proprietary to Glyph Technologies, 227 Cherry Street, Ithaca, New York 14850 ("GLYPH"). Any person or entity to whom this document is furnished or having possession thereof, by acceptance, assumes custody thereof and agrees that the document is given in confidence and will not be copied or reproduced in whole or in part, nor used or revealed to any person in any manner except to meet the purposes for which it was delivered. Additional rights and obligations regarding this document and its contents may be defined by a separate written agreement with GLYPH, and if so, such separate written agreement shall be controlling.

The information in this document is subject to change without notice, and should not be construed as a commitment by GLYPH. Although GLYPH will make every effort to inform users of substantive errors, GLYPH disclaims all liability for any loss or damage resulting from the use of this manual or any software described herein, including without limitation contingent, special, or incidental liability.

GLYPH is a registered trademark of Glyph Technologies.